



Welcome! You'll find plenty to do and see on Bald Head Island, so how you choose to spend your day is up to you. Explore the island's varied environments, climb to the top of North Carolina's oldest lighthouse, relax on one of our pristine beaches, or kayak through the winding marsh—the possibilities are as diverse as the island itself.

Getting To and From Bald Head Island

Transportation to and from Bald Head Island is by passenger ferry or private boat. The ferry leaves the mainland for Bald Head Island every hour on the hour from Deep Point Marina located at 1301 Ferry Road, Southport, N.C. The ferry departs the island every hour on the half hour. Ferry tickets are \$24.75 per person and \$13.75 per child ages 3-12 (prices include a \$1.75 fuel surcharge). Children 2 and under are free; however they will need a ticket for boarding. Ferries operate 365 days a year and ferry hours vary seasonally, so be sure to check the schedule before planning your trip. Ferry schedules are posted online at www.ferrytobhi.com or call 910-457-5003. Parking at Deep Point Marina is \$8 per car, per day or \$10 per car, per day in the summer.

Day visitors not needing island tram service are not required to make a ferry reservation in advance; however, advance reservations are required if tram service is needed. Island trams provide transportation to and from the island ferry terminal and a single island destination; therefore, multiple tram rides per single ferry ticket are not available.

Getting Around the Island

There are no cars allowed on Bald Head Island—transportation is limited to electric carts, bicycles and foot traffic. The island complex is 12,000 acres, including marsh and creeks, and three miles long; therefore, many visitors opt to rent an electric cart, bicycle or kayak to explore the island. The Riverside Taxi is also available for “on demand” service.

CART RENTAL

Electric carts are available for rent at Riverside Adventure Company, located within walking distance of the ferry landing on Bald Head Island. Hourly and daily rental rates are available. During the summer season it is advisable to reserve an electric cart prior to making



the trip to Bald Head Island to ensure a cart will be available during your visit. Daily rates for a 4-person cart are \$60.50; a 6-person cart is \$84.70. Hourly rates start at \$27.50 for the first hour and \$11 for each additional hour. Cart operators must be at least 16 years of age and possess a valid driver's license.

BIKE RENTAL

Bike rentals by the hour, day or week are available through two island outlets: Coastal Urge and Riverside Adventure Company. Coastal Urge rents beach cruisers, fitness bikes, tandem bikes, kids' bikes, trailers and baby joggers. Riverside Adventure Company rents single and multi-speed beach cruisers, tandem and adult trikes, children's bikes, and bikes with baby seats and baby trailers. They also rent battery-powered Pedego electric bikes.

What To Do While You're Here

A short walk from the island ferry terminal you'll find North Carolina's oldest standing lighthouse, Old Baldy, built in 1817. Climb 108 steps to the top for a spectacular 360-degree view of the island while learning about an important part of the island's seafaring history. Admission to the lighthouse and adjoining Smith Island Museum of History is through the museum's gift shop and is \$5 per adult; \$3 for children 3-12; children under 3 are free. Lighthouse hours vary seasonally, but it is open 7 days a week in the summer. Call or visit online to confirm hours. www.oldbaldy.org. 910-457-7481.

Delve deeper into Bald Head Island's history with a guided Historic Tour. Traditional Tours, which originate from Deep Point Marina, include round-trip ferry passage, a voucher towards lunch, Smith Island Museum of History and Old Baldy Lighthouse admission and a guided history tour aboard a tram. Cost is \$57 per adult; children 12 and under, \$47. Reservations are required and can be made by calling the ferry terminal at 910-457-5003. For those already on the island, the No-Frills Tour leaves from the lighthouse and includes museum and lighthouse admission and a guided history tour aboard a tram. Cost is \$25 per adult; children 12 and under, \$20. Reservations are required and can be made by calling Old Baldy at 910-457-7481.

Tour the island's varied environments by electric cart, bicycle or on foot. Car-free roads that wind through the ancient maritime forest, along the creek and marsh, and beside the Atlantic Ocean make Bald Head Island an ideal place to explore.

Walk along our 14 miles of pristine beaches or take a dip in the ocean. While public beach access points are plentiful, please note that the island does not offer public bathrooms near the beach.

Explore the many ways to get out and enjoy the water. Kayaking, standup paddleboarding, surfing, kiteboarding, windsurfing and sailing are all popular water sports on

Bald Head Island. Standup paddleboard, kiteboard and windsurfing lessons and rentals are available through Coastal Urge. Sailing, surfing and kayak rentals, lessons and expeditions are available through the Sail Shop.

Visit Captain Charlie's Station, circa 1903. These historic homes located high on the dune ridge overlooking Cape Fear were originally constructed to house the Cape Fear Lighthouse keepers and their families and are available as rental cottages. 800-432-RENT (7368).

Explore the recreational offerings at the island's two clubs. The Bald Head Island Club features a newly renovated 18-hole golf course, croquet, tennis and pool. The oceanfront Shoals Club offers beach access, pools and volleyball courts. Temporary membership is required for both clubs.

The Bald Head Island Conservancy offers a variety of nature-themed programs seasonally. Become directly involved with the island's sea turtle protection program by adopting a sea turtle nest, adopting a sea turtle, or naming your very own female loggerhead sea turtle by visiting the Bald Head Island Conservancy. www.bhic.org. 910-457-0089.

Take a scenic stroll along the M. Kent Mitchell Nature Trail. This 20-minute walk through the maritime forest and along the salt marsh and tidal creek is a wonderful way to get an up-close view of the island's diverse ecology. The trail's location along Federal Road near the intersection of Muscadine Wynd is marked on the island's Locator Map.

Pamper yourself at the island's day spa, Island Retreat Spa and Salon. Special day packages are available.

Take the family along for a GPS scavenger hunt around the island. A preloaded GPS unit with destinations and a clue sheet is provided at Riverside Adventure Company.

Sail or motor your boat to the Bald Head Island Marina. Docking fees are \$20 for five hours regardless of size of boat. From the marina you can walk to Old Baldy, the Dockmaster Convenience Store, restaurants and to the Riverside Adventure Company to rent island transportation. Dock space is limited. Call the dockmaster for reservations. 910-457-7380.

You can surf fish at various locations on the island. Fishing poles, tackle and bait are available for purchase at the Dockmaster Convenience Store. A valid N.C. Saltwater Fishing License is required. 910-457-7380.



Where to Dine

MOJO'S ON THE HARBOR

Located harborside just a short walk from the island ferry terminal. Casual dining with full bar serving lunch and dinner. Reservations are not required. www.mojoontheharbor.com. 910-457-7217.

DELPHINA NEW WORLD CANTINA

Located in the harbor in the former River Pilot Café and set to open this spring, Delphina features a family-friendly menu. The adjoining Sandpiper Sweets serves ice cream and sweet treats. 910-457-4944.

WILL O' THE WISP

Located in the harbor next to the Sail Shop. Offering wine, beer and snacks in a scenic outdoor setting. Open seasonally. www.thewispbhi.com. 910-457-6844.

THE MARITIME MARKET CAFE

Located at the center of the island inside the Maritime Market on Maritime Way. Serving breakfast, lunch and dinner. www.maritimemarketbhi.com. 910-457-7450.

BALD HEAD ISLAND CLUB

Located along South Bald Head Wynd, the Bald Head Island Club offers casual and fine dining options. Temporary membership is required to dine. 910-457-7300.

THE SHOALS CLUB

Located near the point of the Cape Fear on the southeastern tip of the island, the Shoals Club offers both casual and fine dining. Temporary membership is required to dine. 910-454-4850.

THE ICE CREAM SHOPPE

Located at the center of the island inside the Maritime Market on Maritime Way. Offering a variety of ice cream treats in an outdoor setting. Open seasonally. 910-457-7445.

MIKE'S BITES

Located in front of the Bald Head Island Conservancy. Grab snacks, fresh sandwiches, drinks and frozen treats. Open seasonally.



Island Shopping and Services

ALL ABOUT ART

Located in Merchant's Row, All About Art features a gallery space of local and national artists. Classes and workshops for kids and adults also available. 910-368-5336.

BE OUR GUEST

Located adjacent to the Maritime Market. Offers a variety of hostess gifts, stemware, coasters, picnic accessories and garden items, jewelry, wraps and pocketbooks. 910-457-7450.

BEACH AND BABY EQUIPMENT RENTAL

Offers beach equipment for rent like chairs, tents, games and carts. Also renting high chairs, cribs, monitors and more for baby. www.baldheadbabies.com. 910-363-2036.

CANOPY OUTFITTERS

Located on Maritime Way next to the Maritime Market. Family island wear and accessories. www.canopyoutfittersnc.com. 910-454-8248.

COASTAL URGE BOARDROOM

Located harborside. Offers standup paddleboard rentals, lessons and tours as well as kiteboarding lessons. www.coastalurge.com. 800-383-4443.

COASTAL URGE BIKE SHOP

Located on Maritime Way next to the Coastal Urge Retail Shop. Bicycle rentals, sales and repairs. Daily and weekly rentals delivered to your home. www.coastalurge.com. 800-383-4443.

COASTAL URGE RETAIL SHOP

Located on Maritime Way next to The Silver Peddler. Swimwear, apparel and accessories. www.coastalurge.com. 800-383-4443.

DOCKMASTER CONVENIENCE STORE

Located harborside. Marine supplies, souvenirs, ice and a limited selection of grocery and snack items. 910-457-7380.

THE FRIENDLY FOX TOY SHOP

Located next to Delphina. Indoor and outdoor toys and games. 910-457-4944.

ISLAND HARDWARE

Located a short walk from the Maritime Market. Full range of home improvement, garden and recreational supplies. 910-454-0810.

ISLAND RETREAT SPA AND SALON

Located near the Maritime Market. Full-service day spa and salon featuring environmentally friendly and organic products including candles, skin, hair and nail products. www.islandretreatspa.com. 910-454-0333.

MARITIME MARKET

Centrally located along Maritime Way. Full-service grocery store. www.maritimemarketbhi.com. 910-457-7450.

MARITIME PASSAGE

Located on Maritime Way. Women's clothing and island accessories. www.maritimepassage.com. 910-454-8420.

MERCHANT'S ROW SHOPS

Retail, office and storage center located off Edward Teach Wynd housing a variety of independently owned businesses including shipping and receiving center, framing, electrical, plumbing, painting, tile, cabinetry, handyman maintenance, renovations/remodeling, real estate sales and rentals, and golf cart sales and service. 910-457-4715.

RIVERSIDE ADVENTURE COMPANY

Located in the harbor. Golf cart and bicycle rentals and repairs, beach chair and umbrella rentals, and GPS scavenger hunts. Casual clothing and souvenir items. www.riversideadventure.com. 910-457-4944.

RIVERSIDE TAXI

On demand island taxi service, available year round. www.riversideadventure.com. 910-457-4944.

ROOM SERVICE

Located next to the Maritime Market. Home furnishings, accessories and gifts with a coastal style. 910-457-9911.

THE SAIL SHOP

Located harborside, this outdoor activity center offers kayak and canoe rentals and tours, sailing instruction and rentals, surf board rentals and instruction, as well as summer camps and fishing adventures. Home to the Bald Head Island Sailing Club. www.thesailshop.com. 910-457-6844.

SHOOT PHOTOGRAPHY

Located near the Maritime Market, Shoot Photography offers on-island wedding and family photography services by Anne Liles. 910-470-6980.

SILVER PEDDLER

Located next to the Coastal Urge Retail Shop. Jewelry and gifts for home and garden. 910-457-6900.

SMITH ISLAND MUSEUM GIFT SHOP

Located beside Old Baldy Lighthouse. Books, gifts and souvenirs celebrating the island's seafaring history. Proceeds benefit the Old Baldy Foundation. www.oldbaldy.org. 910-457-7481.

TURTLE CENTRAL

Located at the east end of the island along Federal Road. Environmentally oriented gifts, books and apparel. Proceeds benefit the Bald Head Island Conservancy. www.bhic.org. 910-457-0917.



BALD HEAD ISLAND LIMITED REAL ESTATE SALES

Bald Head Island Limited Real Estate Sales is the largest and oldest real estate company on the island and its sales center is located harborside near the island ferry terminal.

Visitors are invited to stop by to learn about island homes and homesites for sale. Our sales executives can provide information, answer questions, or give a comprehensive real estate tour of the island. Open houses are also scheduled throughout the year. Open daily. www.BHRealEstate.com. 800-888-3707 or 910-457-7400.

Hours for all island eateries and shops vary seasonally. Visit www.baldheadisland.com or contact the outlets directly. Prices subject to change without notice.

Information provided is not intended to be a complete listing of every service, outlet, agency or organization on Bald Head Island. Fees, rates and content are subject to change. Bald Head Island Limited has endeavored to ensure the accuracy of this information; however, we cannot be responsible for misinformation or typographical errors. Individuals should contact outlets to confirm information.



P.O. Box 3069 Bald Head Island, NC
1-800-234-1666
www.baldheadisland.com



BALD HEAD ISLAND LIMITED

BALD HEAD ISLAND LIMITED 2013 Locator Map





BALD HEAD ISLAND LIMITED
PROPERTY MANAGEMENT

If one day just isn't enough on Bald Head Island, we invite you to schedule a longer visit. Bald Head Island Limited Property Management offers a variety of island rental homes ranging from one to 10 bedrooms. Rates vary by season. Visit www.baldheadisland.com or call 1-800-432-RENT (7368) for more information.



5
The Elements - Earth
78 Keelson Row



9
Indigo Pelican
28 Sand Piper Trail



13
Marsh Hawk Cottage
52 Earl of Craven



17
Kate's Choice
2015 Palmetto Cove



21
Aquarius
20 Peppervine Trail



25
Laurie's Loft
9 Brown Pelican Trail



29
Bonnie Doon
5 Scotch Bonnet



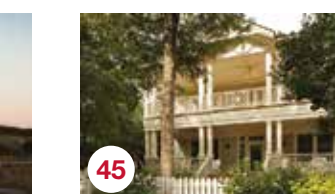
33
Bogan's on the Beach
11 Scotch Bonnet



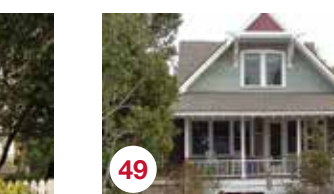
37
Blue Heron
821 Killegray Ridge



41
Captain Charlie's I
6602 East Federal Road



45
Neverland
203 Whale Head Way



49
Stone's Throw
613 Chicamacomico Way



6
The Elements - Air
80 Keelson Row



10
'Om Sweet Home
4 Stede Bonnet Close



14
Salt Meadow Cottage
42 Earl of Craven



18
My Three Dunes
3 Sea Lavender Court



22
Summer Island
4 Coquina Trail



26
Summer House
5 Indian Blanket Court



30
Cattails
3B Scotch Bonnet



34
SeaShells
803B Killegray Ridge



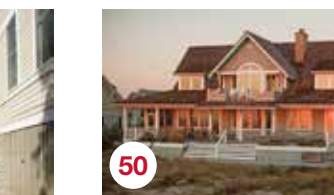
38
Paradise
829 Killegray Ridge



42
Captain Charlie's II
6604 East Federal Road



46
Tiburon Marsh
519 Currituck Way



50
Coastal Beach House
220 Station House Way



1
Twin Peaks
216 Row Boat Row



3
The Elements - Water
68 Keelson Row



7
All Inn
25 Dowitcher Trail



11
Jade Oak
15 Live Oak Trail



15
Two Views
401 South Bald Head Wynd



19
Chirico House
6 Peppervine Trail



23
Island Retreat
3 Coquina Trail



27
Hallelujah
19 Indian Blanket Court



31
Sailing
7 Scotch Bonnet



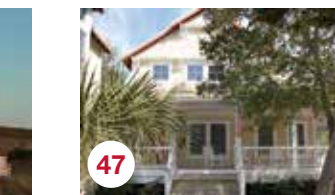
35
Jake's Watch
811B Killegray Ridge



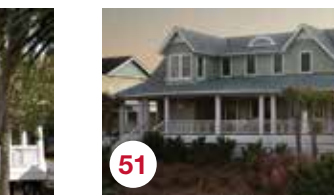
39
Cape Watch Cottage
3 Ballantrae



43
Captain Charlie's III
6606 East Federal Road



47
Marsh Madness
601 Currituck Way



51
Gone To Carolina
214 Station House Way



2
Beacons Watch
2 Keelson Row



4
The Elements - Fire
70 Keelson Row



8
Irish Mist
18 Cape Fear Trail



12
Oak Tree Hollow
17 Live Oak Trail



16
Arcadia
1 Grove Court



20
Krusty Krab
14 Peppervine Trail



24
Footprints in the Sand
14 Coquina Trail



28
Bella Vista
20 Indian Blanket Court



32
Purrfect Paws
8 Scotch Bonnet



36
JJ's Hideaway
3 Skye Crescent



40
Watch Hill
979 South Bald Head Wynd



44
Summer's Crescent 12
12 Summer's Crescent



48
Conch Cottage
602 Currituck Way

Cape Fear River

West Beach

Atlantic Ocean



East Beach

Atlantic Ocean

South Beach

Point of Cape Fear

LEGEND

- Beach Access
- Handicapped Access
- Public Restrooms
- Restaurant
- Fire Station
- Emergency Medical Services
- Emergency Telephone

ISLAND AMENITIES AND LANDMARKS

- A Bald Head Island Marina
- B The Clubs of Bald Head Island
- C Coastal Urge Board Room
- D Horseshoe Pavilion
- E The Sail Shop/Will of the Wisp
- F MoJo's on the Harbor
- G Bald Head Island Limited, LLC Administration Building
- M Bald Head Island Village Center
- N Village Town Hall
- O Village Chapel
- P The Harbors
- Q Old Boat House (c. 1903)
- R M. Kent Mitchell Nature Trail
- S Bald Head Island Limited, LLC Real Estate Sales
- T Room Service
- U Island Retreat Spa and Salon
- V The Maritime Market
- W The Shops at Maritime Way
- X Village of Bald Head Island Fire/Police/EMT Station
- Y Bald Head Island Limited, LLC Maintenance Services
- Z Village of Bald Head Island Utilities Department
- AA Merchant's Row
- BB Captain Charlie's Station (c.1903)
- CC Cape Fear Lighthouse Foundation (c. 1903)
- DD Bald Head Island Conservancy
- EE The Common at Cape Fear Station
- FF Shoals Club

